

DEFENDER® STEEL FRAMED GLASS 'E' FIRE DOORSETS [-/120/-]



Description

Fully glazed fire door incorporating the RP Technik Design 50 profile and Schott PYRAN® glass. Single and double doorsets available with and without top/side lights.

Applications

Residential complexes, hospitals, school's, car parks, shopping centres, computer rooms, offices & high rise apartments

Features

- Slimline architectural steel framing
- Crystal clear views
- Fully certified to Australian Standards
- For use in multiple wall structures
- Low maintenance
- Durable design

Model

DEFENDER®12000-FRD

HOW TO SPECIFY

Fire doorset shall be Defender Glass Fire Door System comprising proprietary steel frame system and Schott Pyran glass "insert" mm thick glass [DEFENDER®12000-FRD]. The entire system must be certified as having been tested/assessed to AS1530.4 and installed in accordance with AS1905.1. Installation must be carried out by an installer registered with and approved by the manufacturer. Australian Fire Control. Phone: [08] 9399 6957. Email: sales@australianfirecontrol.com.au

ABOUT THE GLASS

PYRAN® is far superior to the traditional types of glass used in fire resistant glass. The secret lies in the interaction between the material and the production process. Manufactured in a micro float facility, which is unique within the world, the fire resistant properties of the special float glass surpass those of soda lime glass by far. **Even under high thermal loads, the glazing stays transparent, ensuring that the burning building can be safely evacuated.**

Thickness	5 mm	6 mm	8 mm	10 mm	12 mm
Weight	11.4 kg/m ²	13.7 kg/m ²	18.2 kg/m ²	22.8 kg/m ²	27.4 kg/m ²
Light transmission	92%	92%	92%	91%	91%
Ug value	5.8 W/m ² K	5.8 W/m ² K	5.8 W/m ² K	5.8 W/m ² K	5.8 W/m ² K
Sound insulation value	30 dB	31 dB	32 dB	33 dB	34 dB
Impact rating	1C2	1C1	1C1	1C1	1C1

Maximum system sizes:

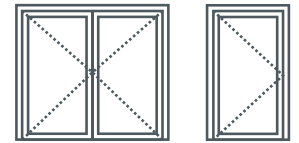
Single Glazing.

FRL	Single Door Leaf Height x Width	Double Door Leaves Height x Width	Comment
-/120/-	2730 x 1090 OR 2230 x 1328 Midrail = YES Both	2330 x 2440 Midrail = YES	680 Top Light available. 580 Side Light available.

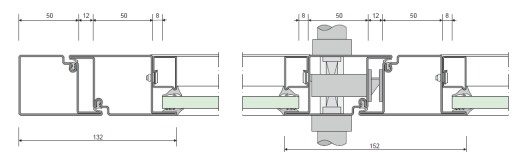
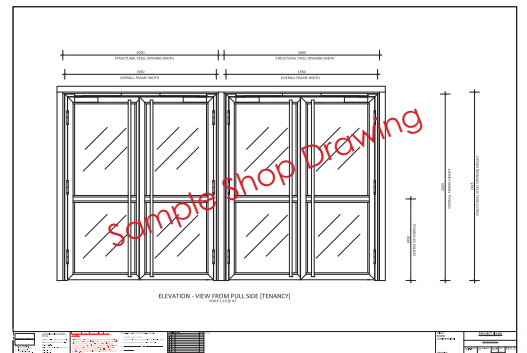
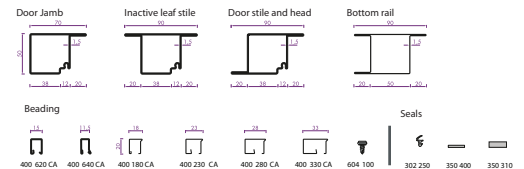
Double Glazing [DGU] Superior thermal and sound insulation.

FRL	Single Door Leaf Height x Width	Double Door Leaves Height x Width	Comment
-/120/-	2730 x 1090 OR 2230 x 1328 Midrail = YES Both	2330 x 2440 Midrail = YES	680 Top Light available. 580 Side Light available.

TECH SHEET - GFD - 12000



Rp Design 50



Australian Fire Control Pty Ltd
 Phone: [08] 9399 6957
 Address: 17 Williams Road Kelmscott WA 6111
 Email: Sales@AustralianFireControl.com.au
 www.australianfirecontrol.com.au