

SYSTEM OVERVIEW

SLIDING DEFENDER FIRE DOOR [STUD WALL]

Description

Sliding fire doorsets consisting of door leaf, and associated track and counterweight closing system, with steel facings, available in 2 hours & 4 hours of certified fire resistance.

Applications

Ideal for most applications that require a certified fire door set especially in residential complexes, hospitals, schools, public buildings etc.

Features

- Tested to AS 1530.4
- Protection of openings in 2hr & 4hr Concrete/Masonry walls.
- Facing - 1.0mm zinc-coated sheet steel as standard.
- All doors have steel channels to protect edge of door leaves.
- Available in single leaf or bi-parting (2 leaves).
- Can be manufactured in sections and assembled on site for easier transport and handling.
- Excellent insulation and sound reducing properties.

HOW TO SPECIFY

Door to be a SLIDING DEFENDER Fire Door, -/120/30 FRL*, including track, fittings and counterweight closing system*. The entire system must be certified as having been tested/assessed to AS1530.4 and installed in accordance with AS1905.1. Installation must be carried out by an installer registered with and approved by the manufacturer. Australian Fire Control. Phone: [08] 9399 6957. Email: sales@australianfirecontrol.com.au

* Denotes example - delete, change or specify as required

FRL capabilities:

- Fire resistance levels
- 1 hour (NA/60/30),
 - 2 hours (NA/120/30)
 - 3 hours (NA/180/30)
 - 4 hours (NA/240/30)

Maximum Sizes Available

Single leaf, bi-parting and multiple leaf :
5.5 metres high and 8 metres wide – (over-all size)

Combination (multiple leaf bi-parting) :
4 metres high and 15 metres wide - (overall size)

Fire door certification

Each fire door will display a metal tag as described in AS 1905.1-2005. All relevant forms and certificates must be completed after each door leaf has been tagged by the contractor responsible for the supply and installation of the system(s).



Standard Hardware:

- Henderson 305 or 307 Track and brackets for wall mounting.
- Door hangers & floor guide.
- Closing system as described above, including: cables, pulleys & counterweight.
- Flush-mounted door pulls.
- Steel wall-mounted door binders.
- Indicator arrow on both faces to indicate opening direction.

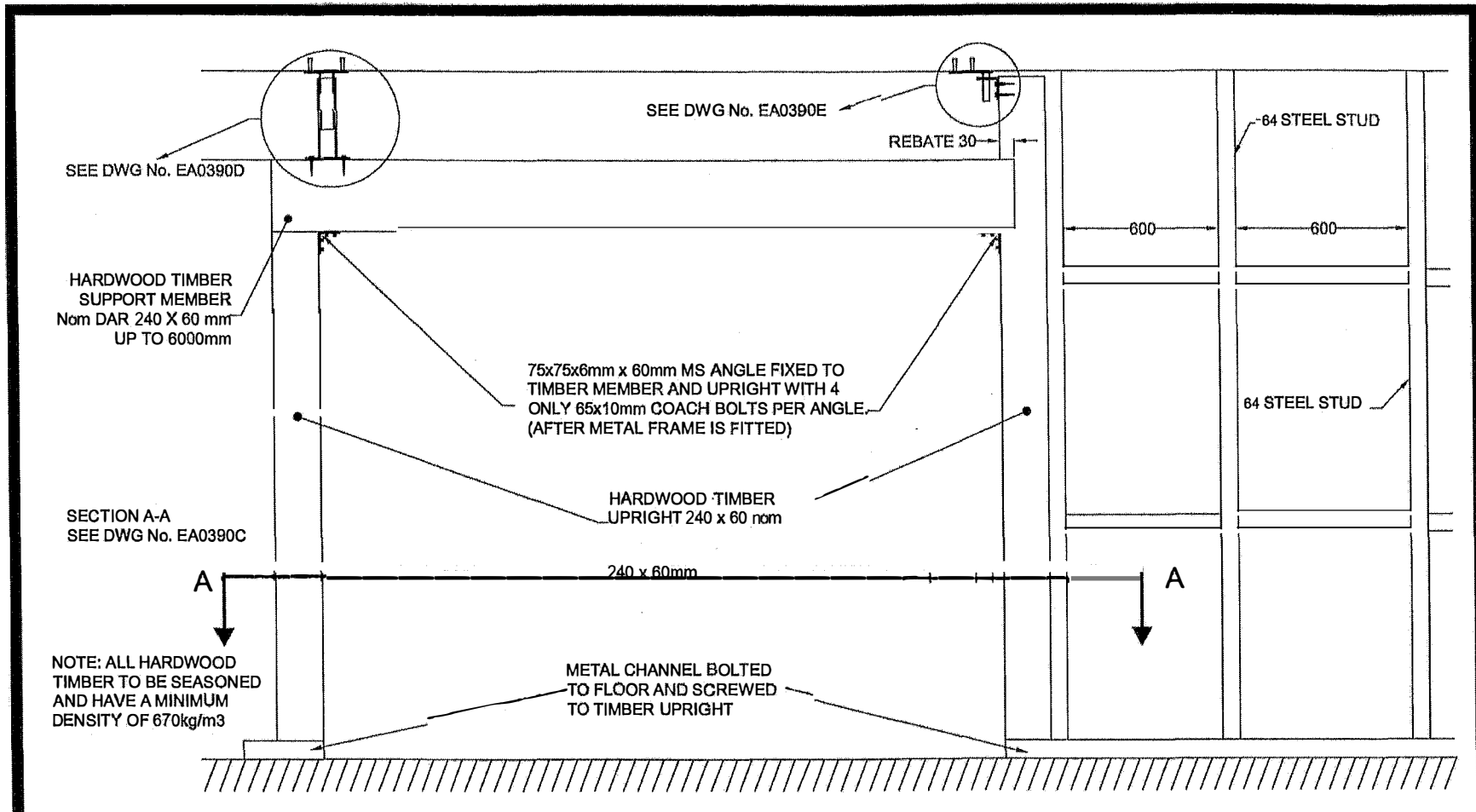
Technical Details:

- All sliding fire doors must overlap top and both sides
- Maximum clearance between door and floor should be 10mm.
- Ensure no wall obstructions along the distance of travel.
- Ensure there is sufficient wall area around the opening for track & counterweight closing system.



Commercial In Confidence.

This document is commercially sensitive and must NOT be disseminated to a third party without first obtaining written permission from Australian Fire Control Pty Ltd.



tyco
Building Products Pty Limited

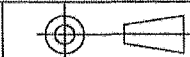
21-25 Mitchell Road Brookvale NSW 2100 Australia
Telephone: 612 9938 5499 Facsimile: 612 9905 7019

UNLESS OTHERWISE STATED
ALL DIMENSIONS IN mm

TOLERANCES

LINEAR: ± 1mm
ANGULAR:

DRAFTING STD. AS1100



MATERIAL:

FINISH:

DRAWN: PAUL LAM

CHKD: GEORGE CUNNINGHAM

APPD:

DATE: 26/06/2001

TITLE: PARTITION WALL - SOFFIT FIXED TRACK

PROJECT: E-CORE SLIDING FIRE DOOR IN PARTITION WALL

SIZE: A4 DWG# EA0390B

SCALE: N.T.S

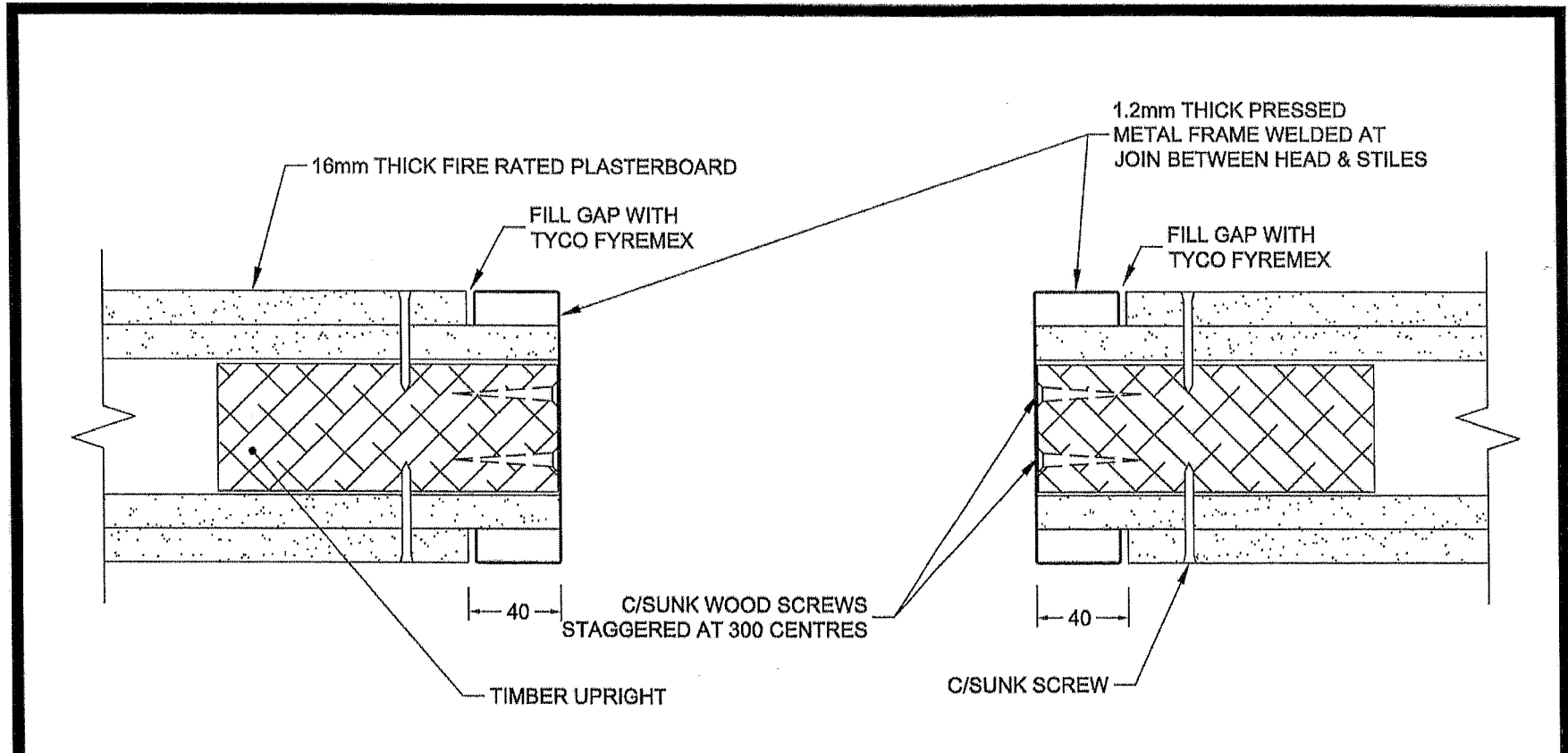
SHEET 1 OF 1

This drawing is the property of Tyco Building Products Pty. Ltd. and shall be returnable to Tyco Building Products Pty. Ltd. immediately upon their request. It is loaned on the condition that it is not reproduced, copied or otherwise made use of in any form whatsoever, except directly for the exclusive benefit of Tyco Building Products Pty. Ltd. and the acceptance of this drawing will be construed as an agreement to the foregoing conditions.

Commercial In Confidence.

This document is commercially sensitive and must NOT be disseminated to a third party without first obtaining written permission from Australian Fire Control Pty Ltd.

CO-20078

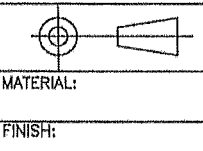


SECTION A-A

REFER DWG No. EA0390A & B

tyco
Building Products Pty Limited
21-25 Mitchell Road Brookvale NSW 2100 Australia
Telephone: 612 9938 5499 Facsimile: 612 9905 7019

UNLESS OTHERWISE STATED
ALL DIMENSIONS IN mm
TOLERANCES
LINEAR: ± 1mm
ANGULAR:
DRAFTING STD. AS1100



DRAWN: PAUL LAM
CHKD: GEORGE GUNNINGHAM
APPD:
DATE: 28/08/2001

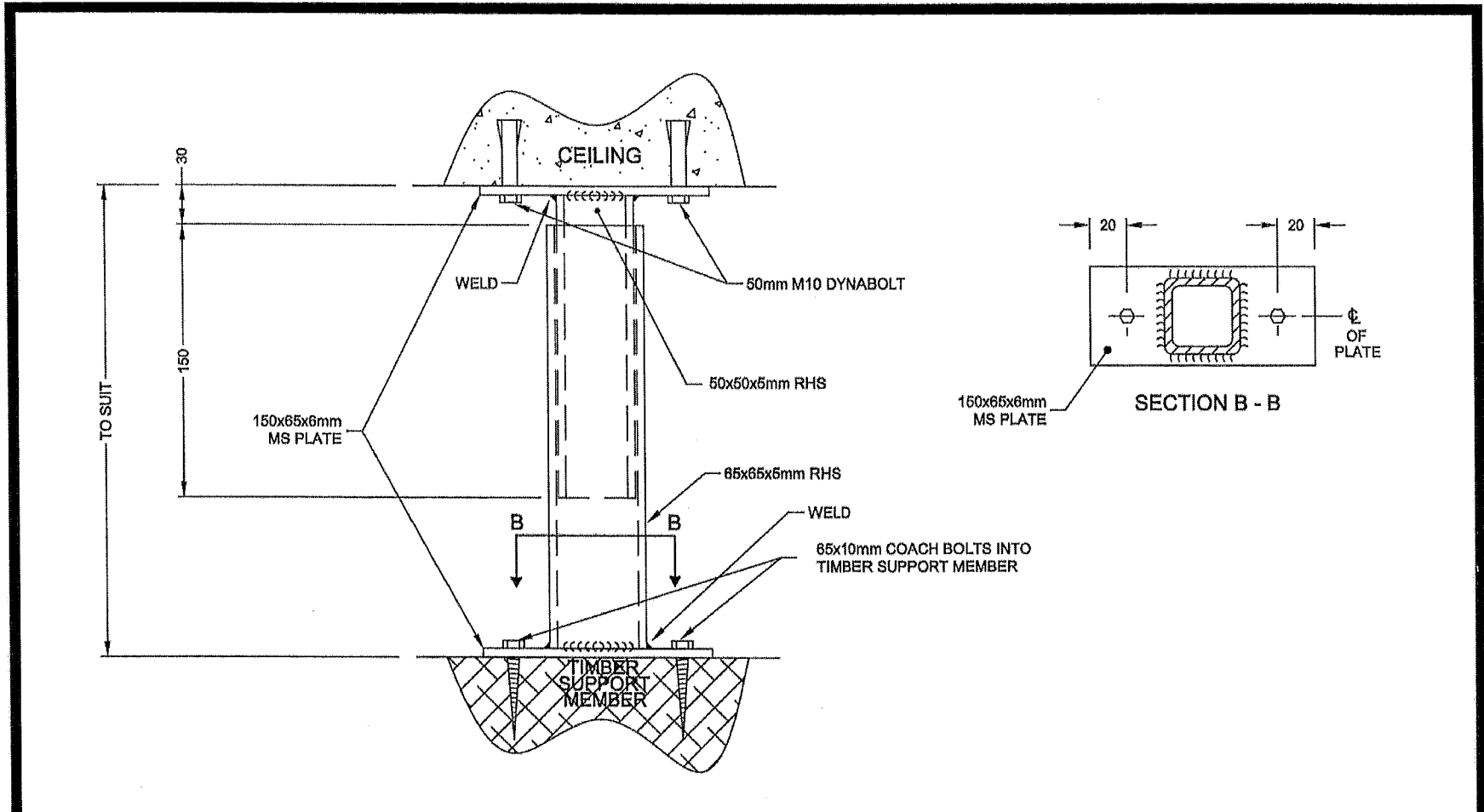
TITLE: PARTITION WALL - FRAME CAPPING
PROJECT: E-CORE SLIDING FIRE DOOR IN PARTITION WALL
SIZE: A4 DWG# EA0890C
SCALE: N.T.S
SHEET 1 OF 1

This drawing is the property of Tyco Building Products Pty. Ltd. and shall be returnable to Tyco Building Products Pty. Ltd. immediately upon their request. It is loaned on the condition that it is not reproduced, copied or otherwise made use of in any form whatsoever, except directly for the exclusive benefit of Tyco Building Products Pty. Ltd. and the acceptance of this drawing will be construed as an agreement to the foregoing conditions.

Commercial In Confidence.

This document is commercially sensitive and must NOT be disseminated to a third party without first obtaining written permission from Australian Fire Control Pty Ltd.

CO-2007B



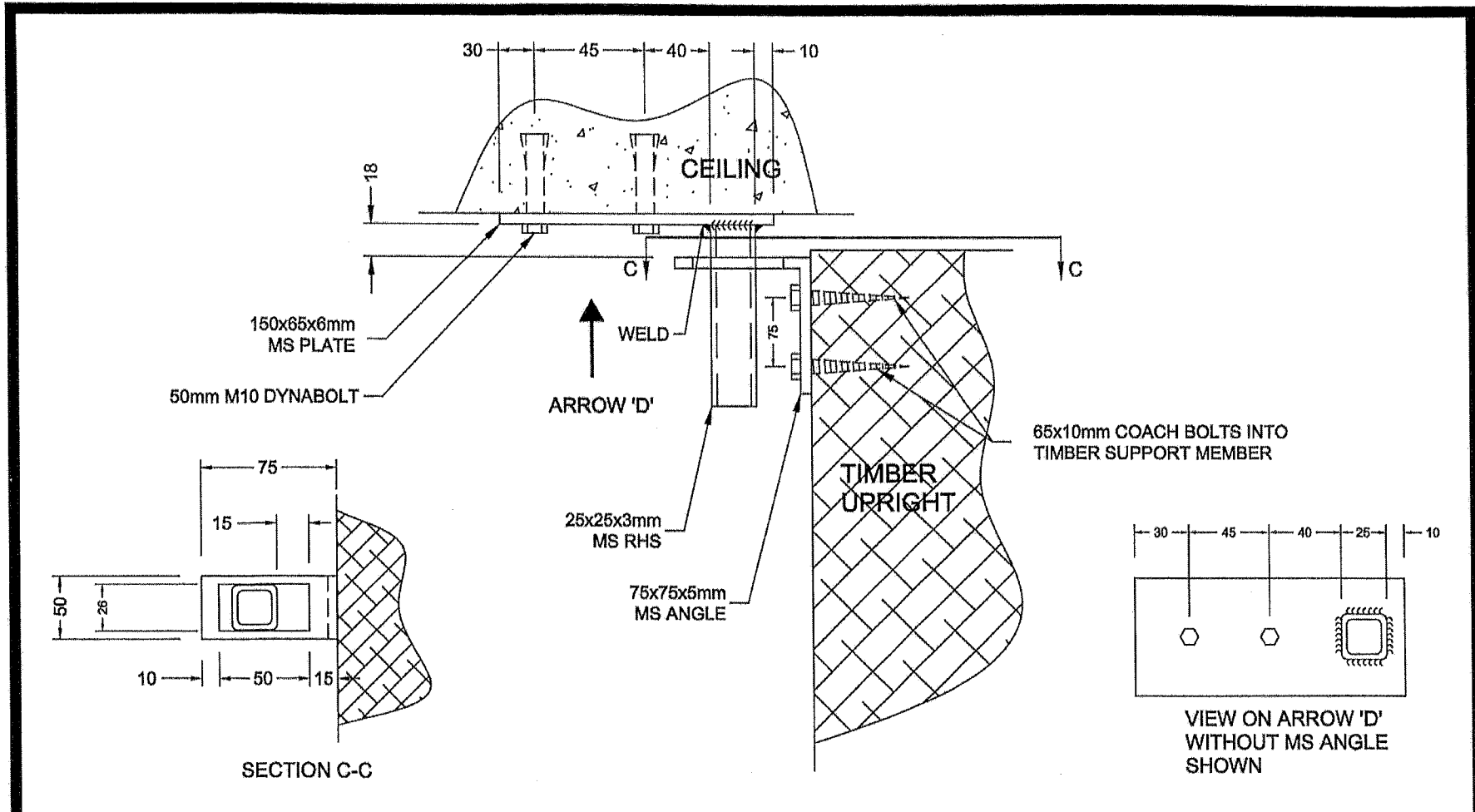
<p>tyco Building Products Pty Limited 21-25 Mitchell Road Brookvale NSW 2100 Australia Telephone: 612 9938 5499 Facsimile: 612 9905 7019</p>	UNLESS OTHERWISE STATED ALL DIMENSIONS IN mm		DRAWN: PAUL LAM	TITLE: PARTITION WALL - TUBE MOUNTING		
	TOLERANCES		MATERIAL:	CHKD: GEORGE CUNNINGHAM	PROJECT: E-CORE SLIDING FIRE DOOR IN PARTITION WALL	
	LINEAR: ± 1mm	FINISH:	APPD:	SIZE: A4	DWG# EA0390D	
	ANGULAR:		DATE: 28/06/2001	SCALE: N.T.S	SHEET 1 OF 1	
DRAFTING STD. AS1100						

This drawing is the property of Tyco Building Products Pty. Ltd. and shall be returnable to Tyco Building Products Pty. Ltd. immediately upon their request. It is loaned on the condition that it is not reproduced, copied or otherwise made use of in any form whatsoever, except directly for the exclusive benefit of Tyco Building Products Pty. Ltd. and the acceptance of this drawing will be construed as an agreement to the foregoing conditions.

Commercial In Confidence.

This document is commercially sensitive and must NOT be disseminated to a third party without first obtaining written permission from Australian Fire Control Pty Ltd.

FCO-2007B



tyco

Building Products Pty Limited

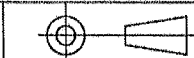
21-25 Mitchell Road Brookvale NSW 2100 Australia
Telephone: 612 9938 5499 Facsimile: 612 9905 7019

UNLESS OTHERWISE STATED
ALL DIMENSIONS IN mm

TOLERANCES

LINEAR: ± 1mm
ANGULAR:

DRAFTING STD. AS1100



MATERIAL:

FINISH:

DRAWN: PAUL LAM

CHKD: GEORGE CUNNINGHAM

APPD:

DATE: 26/06/2001

TITLE: PARTITION WALL - ANGLE MOUNTING

PROJECT: E-CORE SLIDING FIRE DOOR IN PARTITION WALL

SIZE: A4 DWG# EA0390E

SCALE: N.T.S

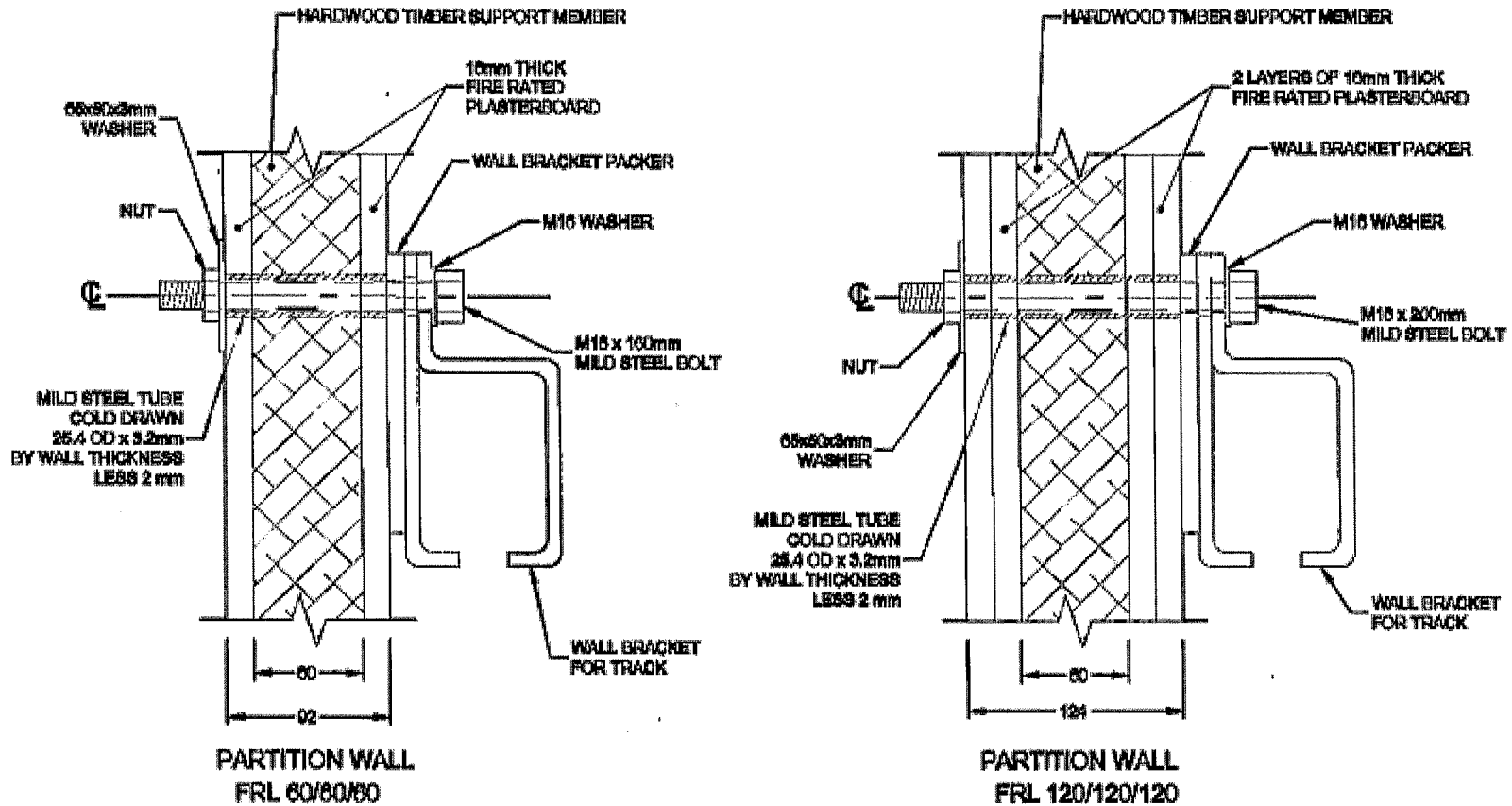
SHEET 1 OF 1

This drawing is the property of Tyco Building Products Pty. Ltd. and shall be returnable to Tyco Building Products Pty. Ltd. immediately upon their request. It is loaned on the condition that it is not reproduced, copied or otherwise made use of in any form whatsoever, except directly for the exclusive benefit of Tyco Building Products Pty. Ltd. and the acceptance of this drawing will be construed as an agreement to the foregoing conditions.

Commercial In Confidence.

This document is commercially sensitive and must NOT be disseminated to a third party without first obtaining written permission from Australian Fire Control Pty Ltd.

CO-2007B



tyco

Building Products Pty Limited

21-25 Mitchell Road Brookvale NSW 2100 Australia
 Telephone: 612 9938 5499 Facsimiles: 612 9908 7019

UNLESS OTHERWISE STATED
 ALL DIMENSIONS IN mm

TOLEANCES

LINEAR: ± 1mm

ANGULAR:

DRAFTING STD. AS1100



MATERIAL:

FINISH:

DRAWN: PAUL LAM

CHKD: GEORGE GUNTINGHAM

APPD:

DATE: 26/08/2001

TITLE: PARTITION WALL MOUNTINGS OF TRACK

PROJECT: X-CORE SLIDING FIRE DOOR IN PARTITION WALL

SIZE: A4 DWG# XA0900F

SCALE: N.T.S SHEET 1 OF 1

This drawing is the property of Tyco Building Products Pty. Ltd. and shall be returnable to Tyco Building Products Pty. Ltd. immediately upon their request. It is loaned on the condition that it is not reproduced, copied or otherwise made use of in any form whatsoever, except directly for the exclusive benefit of Tyco Building Products Pty. Ltd. and the acceptance of this drawing will be construed as an agreement to the foregoing conditions.